

The North Side, Spokane, Washington

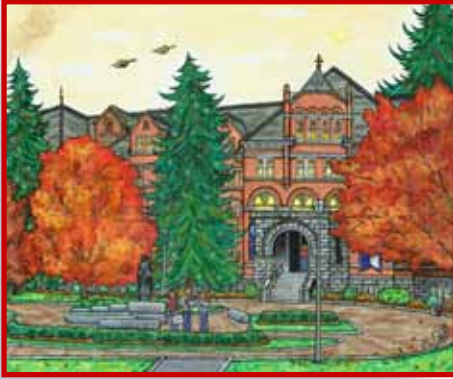
30 FINE ART "AMERICANA" PAINTINGS OF PRETTY PUBLIC PLACES AND "HOME SWEET HOMES"
 • INCLUDING GONZAGA UNIVERSITY, GONZAGA PREP, SAINT AL'S GRADE SCHOOL, OTHER SCHOOLS AND CHURCHES PLUS COZY COTTAGES, MARVELOUS MANSIONS AND MORE!



THE NORTH SIDE • PUBLIC PLACES • LEGENDARY GONZAGA UNIVERSITY

Bozarth Mansion in Bloom (Gonzaga University Retreat Center) ~ 4.2010

In 1911-1913, this mansion was built for historic Spokane developer J.P. Graves by the renowned local architect Kirtland K. Cutter for about \$100,000. The famed Olmsted Brothers of Brookline, MA designed the extensive gardens and underground water system. In addition to owning one of Spokane's trolley lines, Graves was also reputed to have the largest herd of jersey cattle on the west coast. The estate was originally called "Waikiki" in honor of the island Graves visited in the Hawaiian Islands and also because of the nearly two-dozen streams that ran through his property near the Little Spokane River ("Waikiki" means lots of rushing water). In 1963, the mansion was purchased by Gonzaga University and began functioning as its retreat center. This setting has also hosted dozens of weddings over the decades when not functioning as the retreat center. Its gardens were legendary. *Highlight* - In the 1960s, our family lived next door to the Bozarth family - distant relatives of the folks who owned this property after J.P. Graves.



Classmates at College Hall (Gonzaga University) ~ 6.2013

Gonzaga University owes its beginning to Italian-born missionary Fr. Joseph Cataldo, S.J. Often in poor health, he was a dynamo nonetheless and was appointed General Superior of the Rocky Mountain Mission in 1877 (8 residences and 38 members scattered throughout the Northwest). Competition with Protestants for access to local Native American tribes was the main reason for founding a Jesuit college in Spokane. When it opened, applicants had to "know how to read and write, and not be under ten years of age." Originally only white students were permitted to enroll. Railroad land was purchased in 1881. Gonzaga began educating in 1887, and was incorporated and able to grant degrees by 1896. A permanent residence and 4-story building was completed by 1899. Handsome, stately "College Hall" became the key building on the beautiful campus. *Highlight* - The hall's entrance was further enhanced in April 2008 by the dedication of George Carlson's Saint Ignatius statue, a reflection pool and new landscaping.



Daffodils in the Rain at DeSmet Hall (Gonzaga University) ~ 4.2016

Construction began by John Huetter on Gonzaga University's 1st and oldest dormitory on 1925. A stonemason and brick layer, Huetter also built College Hall and the Huetter House - the old Bishop White Seminary which became the G.U. Alumni House decades later. At a cost of \$98,000, the men-only facility originally offered students 72 double rooms. In 1924, Gonzaga mounted the acclaimed passion play "Golgatha" for Spokane and raised \$7,000 towards the cost of the dorm's construction. On October 25th, 1927, DeSmet Hall opened, followed by a football game between Idaho and Gonzaga. Gonzaga won 12 to 3 and funds from ticket sales also went to the building fund. In this piece, I pictured folks in shirts that spelled out "G.U. Bulldogs": (L-R) Teresa and Sean Mulholland (Sean lived in DeSmet Hall and met Teresa at G.U.); Sean's folks Bill and Carol Mulholland; me and husband Doug (my father was a graduate of both the university and law school, teaching night law classes part time after World War II); and Joe and Mary Doohan (Joe graduated from Gonzaga and Mary spent 1 year in Italy as part of the G.U. Florence program). *Highlight* - Rumor had it that famous crooner and movie star Bing Crosby was kicked out of school when he threw a piano out of DeSmet Hall - untrue as he had already moved to Hollywood, California in early 1924 when construction was just beginning on the dormitory.

Bing Crosby's Craftsman (Gonzaga University) ~ 7.2008

This handsome two-story craftsman house cottage was home to Hollywood's most famous crooner Bing Crosby and one of Hollywood's most memorable actors during his years of growing up on Spokane's North Side - although Harry L. Crosby was born in Tacoma, Washington. Located adjacent to Gonzaga University campus, Crosby was a huge booster of the college during his lifetime and did a great deal for the university, including fundraising and donating the famous Crosby Library. Although Bing never finished earning his degree at Gonzaga, in later years he was awarded a special honorary degree, an especially meaningful occasion for him. For many years, Crosby's craftsman served as the home for the Gonzaga Alumni Association, which later moved to the Huetter House across Boone Avenue from this house. *Highlight* - My father met Bing Crosby when the actor was in town and came to listen to the band my dad was playing in during his college years.



The Historic Huetter House (Gonzaga University) ~ 5.2007

John Huetter started work on this stately mansion in 1889. In the construction business - and a fine stone mason and brick layer - he was also responsible for Gonzaga University's DeSmet Hall and the Administration Building (College Hall). The great fire of 1889 provided other opportunities, such as the construction of the original St. Joseph's Orphanage. Huetter's family of nine children were active in St. Aloysius parish. Several Catholic organizations used this house until 1956 when Bishop Bernard J. Topel dedicated it to the memory of Bishop Charles D. White (second bishop of the Spokane Diocese) and commissioned it as a Preparatory Seminary. This painting was completed to honor its 50th year of preparing men for the priesthood. When a new seminary was built, a decision made to move the historic structure to its location near Bing Crosby's residence where it began serving Gonzaga University as the alumni center. *Highlight* - I pictured my brothers John, Bill and Bob Simpson as young altar boys in the foreground of this piece.

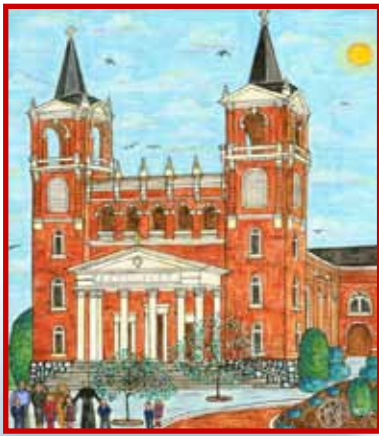


Patti Simpson Ward



The North Side, Spokane, Washington

30 FINE ART "AMERICANA" PAINTINGS OF PRETTY PUBLIC PLACES AND "HOME SWEET HOMES"
• INCLUDING GONZAGA UNIVERSITY, GONZAGA PREP, SAINT AL'S GRADE SCHOOL, OTHER SCHOOLS AND CHURCHES PLUS COZY COTTAGES, MARVELOUS MANSIONS AND MORE!



Sunday Morning at Saint Al's (Gonzaga University) ~ 2.1997

This piece portrayed majestic Saint Aloysius Catholic Church which served both the North Side's Gonzaga University students and faculty - as well as folks from every neighborhood in Spokane who count themselves as parishioners of this church whether they lived near it or not. The setting for hundreds of weddings, christenings, funerals, baccalaureates, first communions and confirmation as over the many decades when it has stood in place, this church has always been loved by many. The stunning structure was designed by famed Spokane architect Herman Preusse at the turn of the last century. Its spires are a huge iconic signature identifying Gonzaga University on Spokane's skyline. Saint Aloysius has served as subject matter for many fine artists in the Inland Northwest. When I was a high school student in the late 1960s, Holy Names Academy and Gonzaga Preparatory High School also held important religious celebrations here like Baccalaureate Mass. *Highlight* - I pictured beloved Jesuit Father Tony Lehman in this piece, shown visiting with the Joe Doohan family after Sunday morning Mass. Joe commissioned this painting for the March 1997 St. Aloysius parish auction.

PUBLIC PLACES • GONZAGA PREPARATORY SCHOOL



Gathering at Gonzaga Prep ~ 3.2017

Gonzaga Prep was established in 1887 by Father Joseph Cataldo, S.J. with eight other faculty members. It became one of four Jesuit High Schools in the Pacific Northwest acclaimed for "preparing students for life." Once known as Gonzaga High, from early years it had a solid relationship with Gonzaga University. Gonzaga High was located within the college at one setting or another wherever the institution moved - and some years, the tuition from its considerable student body helped keep the college afloat. The high school split from the college administratively in 1926, but the permanent move to Euclid Avenue did not occur until 1954 after Father Gordon Toner, S.J. purchased 85 lots that ultimately became the campus. Ground was broken in 1953 and a year later, Gonzaga Prep began teaching its 610 male students. In 1975 with the close of Holy Names Academy (Marycliff High School followed in 1979), Prep opened its doors to women. Also history making, in the late 1980s, Gonzaga Prep became the first Jesuit school in the United States to hire a lay president. When I painted this artwork, John Traynor's longtime successor Al Falkner was completing his 43rd and final year of service before retiring in Spring 2017. Pictured on the right (front to back): Al Falkner, president; Joe Feryn, counselor and track coach; Phil Kuder, teacher and golf coach; and Fr. Peter Byrne, S.J., Superior Marresa community. *Highlight* - This campus view inspired by Al, pictured the old school building, the Barberi Student Center and the Chapel of the Three Companions with students on a break between classes.

Gathering with Friends at Gonzaga Prep ~ 6.2017

In 2017, after 43 years serving as Gonzaga Prep's president, Al Falkner commissioned me to paint in extra respected individuals he had worked with into a canvas reproduction. I then used this version to have framed prints created for each associate as a memento of their time spent under Al's leadership. The Falkner family hosted a special celebration dinner where they presented the artwork to these people.

PUBLIC PLACES • SAINT ALOYSIUS GONZAGA GRADE SCHOOL



NEW! Meeting on Mission at Saint Al's School ~ 2.2020

Summer Break at last! In this piece, families and friends have gathered to collect the kids with Pastor Tom Lamanna, S.J. and Principal Angie Krauss on-hand to say good-bye for the school year. St. Aloysius Gonzaga Parish Grade school opened in September 1916 on the grounds of Gonzaga College. Decades later in 1940, a new brick school on 611 East Mission Avenue began educating. The Holy Names Sisters, who also staffed nearby Holy Names Academy (closed in 1975), were an integral part of this Jesuit-based school. The Jesuit goal has always been to create outstanding leaders based on the teachings of Jesus Christ - as evidenced in Spokane with the Montessori Pre-School, Saint Aloysius Gonzaga Grade School, Gonzaga Prep, Gonzaga University and Law Gonzaga School. Over the decades, this goal has remained intact. The elementary school pictured here was enlarged and improvements made to meet the needs of the faculty and students. *Highlight* - I painted this fine art for the school's 2020 annual fund-raiser.

PUBLIC PLACES • OTHER HISTORIC NORTH SIDE SCHOOLS, CHURCHES AND MORE



Celebration at Holy Names Academy ~ 4.2013

This artwork was a revision of an earlier painting specially created to honor the 125th anniversary of the arrival of the Sisters of the Holy Names to Spokane, Washington. It pictured beloved Holy Names Academy and dear friends (teachers, classmates, my two little sisters and me) at the campus of this beautiful old red brick Victorian structure. The building functioned as a "normal school" (teachers' college) before it became a private Catholic school for girls. Located a few blocks east of St. Aloysius Church, Holy Names Academy closed its doors in 1975. The empty building sank into disrepair until 1987 when it was developed by Henry A. Green into "The Academy," a non-denominational full-scale retirement community. *Highlight* - This setting was featured for a few minutes in the movie starring Johnny Depp and Mary Stuart Masterson, "Benny & Joon."



Patti Simpson Ward



The North Side, Spokane, Washington

30 FINE ART "AMERICANA" PAINTINGS OF PRETTY PUBLIC PLACES AND "HOME SWEET HOMES"
 • INCLUDING GONZAGA UNIVERSITY, GONZAGA PREP, SAINT AL'S GRADE SCHOOL, OTHER SCHOOLS AND CHURCHES PLUS COZY COTTAGES, MARVELOUS MANSIONS AND MORE!



Flowerfield in the Fall (Saint George's School) ~ 6.2008

Located on the banks of the Little Spokane River on Spokane's North Side, Flowerfield was once the 440-acre Summer estate of Louis Davenport, his wife and son. The property was sold in 1955 and 120 acres of it became Saint George's School. The Davenport's lovely two-story residence was preserved as part of the private school's campus, serving as an event center. Student John Meyer took the photos I worked from to create this artwork. Louis Davenport was known for hiring outstanding architects and commissioned renowned architects Kirtland K. Cutter and Karl Malmgren to design what was to become one of the grandest hotels in Spokane's history. Closed for decades, the Davenport Hotel was restored to its former glory by Walt and Karen Worthy, and re-opened to the public in the early 2000s.



November at North Central High ~ 11.2015

Until 1907, students only had Spokane High School (renamed South Central High) on Fourth & Howard to educate them. In 1908, North Central High School opened with only half a wing and a dozen classrooms for its 200 students. Eventually the other wing was added plus the gymnasium. In 2010, Central Spokane High burned to the ground, so its students joined the N.C. student body while a replacement was built. A contest sponsored by *The Spokane Daily Chronicle* to name the South Hill school was won by N.C.'s Principal Richard Hargreaves who came up with "Lewis & Clark." Important early guests to North Central included orator William Jennings Bryant and ex-slave Booker T. Washington. I gave this piece 1968 timeframe, picturing the "N.C. Indians" banner, cheerleaders, a football player, majorette, "Key Club" member, a female athlete in a letter sweater, ASB President Dave Westfall, Sue Saling (Betts) who was a huge help in researching this piece. Highlight - During Spokane's Expo 74, over 10,000 alumni gathered from around the world at the Spokane Coliseum for a mammoth all-class reunion. This handsome building was demolished in 1978 to make way for a modern structure.



Snow Chapel at Holy Names ~ 10.2012

This was the second portrait of my Holy Names Academy high school building painted 15 years after the first, "Celebrating Spring at HNA." This work was completed in honor of the arrival of the Sisters of the Holy Names of Jesus and Mary's to the Pacific Northwest 125 years ago. I pictured my classmates and younger sisters working on a chapel made of snow and twigs on the front campus grounds while our teachers looked on. The Victorian red brick building functioned as a "normal school" (teachers' college) before it became a private school for girls. Located a few blocks from Gonzaga University, HNA closed its doors in 1975 and the empty building sank into sad disrepair. In 1987, it was developed into "The Academy," a non-denominational full-scale retirement community by local developer Harry A. Green. **Highlight** - it was featured for a few minutes in the movie starring Johnny Depp, "Benny & Joon."



Fresh Flowers at Saint Joseph's ~ 3.2015

I painted this portrait of Saint Joseph's Catholic Church to honor its 125th birthday. Jesuit Leopold Van Gorp purchased the West Central neighborhood property at the corner of Dean Avenue and Walnut Street in 1890 and sold it to the Corporation of Roman Catholic Bishops of Nisqually, Washington Territory. A frame church was originally built on the site, but as the parish grew, German-born Julius A. Zittel (named Washington's "state architect" in 1987) was tapped to design a new church and later a convent. The church was constructed in 1901 of brick masonry in the Late Gothic Revival style and the convent in 1924 in the Collegiate Gothic style. This church featured many fine Gothic architectural details including its handsome steeple, stepped buttresses and beautifully detailed stained-glass windows. It was enlarged in 1909, but other than that, very few exterior alterations were made over its more than 100 years of service. Only Our Lady of Lourdes (1881) parish held the distinction of being older than Saint Joseph's in the young, thriving community. **Highlight** - A 1901 issue of *The Spokesman Review* described Saint Joseph's Catholic Church as "one of the prettiest small churches in the Northwest."

Little Grotto in the Woods (Holy Names Convent) ~ 12.2004

This lovely little grotto and its statue of the Blessed had an interesting history. For decades this statue weathered the elements on the grounds behind the private school for girls Holy Names Academy. Closing its doors in 1975, the building was eventually sold and the statue was removed from the gardens. At the SNJM (Sisters of the Holy Names of Jesus and Mary) facility that was built near Fort George Wright, the grounds slowly began taking shape. A garden grotto in the nearby forest (a quiet place of meditation for the sisters) was created of river rock, timbers - and lots of imagination. In the clearing, flowers were planted, benches installed - and finally the statue carefully restored with fresh paint was placed in this beautiful new home. I pictured my mother Sally, sister Peggy and her daughters Kelly and Isabell and beloved Father Tony Lehman with Sister Eileen Rose in this artwork. The property that was home to the Holy Names sisters' convent, Sister Paula Mary's studio and the beloved grotto went on to become part of Spokane's Catholic Charities.



Patti Simpson Ward



The North Side, Spokane, Washington

30 FINE ART "AMERICANA" PAINTINGS OF PRETTY PUBLIC PLACES AND "HOME SWEET HOMES"
• INCLUDING GONZAGA UNIVERSITY, GONZAGA PREP, SAINT AL'S GRADE SCHOOL, OTHER SCHOOLS AND CHURCHES PLUS COZY COTTAGES, MARVELOUS MANSIONS AND MORE!

PUBLIC PLACES AND OTHER SMALL BUSINESSES • ALPHABETICALLY



Breakfast Bunch at Knight's Diner ~ 6.2011

Rail car #988 was commissioned by Ohio's Barney-Smith, Co. and beautifully detailed by the Pullman Car Company of Pittsburgh, Pennsylvania in 1906. The luxury dining car served the Northern Pacific Railroad's Yellowstone Route until its retirement in 1920. Years later when Jack Knight left the elegant Davenport Hotel to open his own business, he converted the fine old dining car into his restaurant - thus the name. Located in Hillyard (incorporated into Spokane in 1924), in 1989, new owners moved the rail car to its current location on Market Street shown in this artwork. They added new paint, polished all the original fixtures and opened for business. Located near Esmeralda Golf Course, this piece pictured the owner at the time this painting was completed welcoming a group of lady golfers - me, sis Peggy Barton, mother Sally Simpson, niece Kelly Barton and pals Molly Roberts Hannan, Rita Drake and Carmen Perkins. In the foreground, I pictured friends Linda Ebner and Maria Herbert ready to bike home with their breakfasts as husband Doug arrived to treat our grandkid junior golfers Addison and Austin to a meal. **Highlight** - Before it became a diner, the rail car served during World War II as an induction hall for the armed services.

Doyle's Darling Ice Cream Parlor ~ 12.2015

Located in the midst of Spokane's West Central neighborhood on the North Side on the corner of Boone and Nettleton, this whimsical red and white signature "landmark" was built in 1939 as the Pacific Northwest was climbing out of the Great Depression. For decades, it overlooked the trolley line tracks on Boone Avenue that carried passengers to and from beloved Natatorium Park. It was a favorite spot for folks to stop and purchase ice cream treats. Nat Park closed in 1968 and its site became the San Souci Mobile Home Park. The West Central area fell on difficult times, making it quite a challenge for the little ice cream shop to keep going. Years later in the 2000s, the Kendall Yards development began to take shape. This new neighborhood overlooking the Spokane River from the north bank helped to breathe life back into the ice cream shop. It was recently spruced up with a shiny new coat of paint and other improvements. **Highlight** - From the 1930s on, Doyle's always had a reputation for its delicious homemade flavors. In 2013, the parlor was voted #6 for the very finest ice cream out of 11 Spokane establishments.

Gathering at the Garland Milk Bottle ~ 13.2016

This piece pictured Paul E. Newman's Benewah Creamery's Milk Bottle building on Garland Avenue, the first of two in Spokane (this one constructed in 1934) of the six planned by Whitehouse and Price (Hutton Settlement and more). At a hefty price tag of \$3,700 each, the Great Depression probably was the culprit in only allowing for two. The milk bottle buildings were classic examples of "literalist" architecture as they advertised in a very real way exactly what they were selling. After decades of serving the community, the Benewah Creamery closed in 1978 and the milk bottle when on to house a variety of small businesses. When I painted this portrait, it was a diner that served the Garland District as Mary Lou's Milk Bottle. I painted students from North Side high schools - Rogers, Gonzaga Prep, North Central, Holy Names Academy and Shadle - in their school colors gathering for ice cream treats. **Highlight** - In 2011, fire nearly destroyed the milk bottle and adjacent Fergusson's Café, but after a year of rebuilding, the beloved historic icon reopened for business.

Merry Meeting at the Flour Mill ~ 5.2016

(Also part of the "Downtown District" Collection) The historic Flour Mill has served Spokane as a unique refurbished retail destination since 1974 and Spokane's Expo 74 Environment World's Fair. The setting featured boutique-style shops, Clinkerdagger's Restaurant, event center spaces on its grounds and interior - including the recent addition of an enclosed rooftop space overlooking Spokane's Riverfront Park and the Downtown District. Built in 1895, this was one a several mills on the Spokane River that took advantage of the power they produced in the late 1800s before F. Rockwood Moore developed Washington Water Power (later Avista). It was initially involved in one of the most difficult, hard fought lawsuits in Spokane's history that delayed its operation for five years. **Highlight** - I pictured friends Tom and Kathie Kellogg's cozy trailer in front of the flour mill, offering traditional roasted chestnuts on a chilly afternoon.

The Spokane County Courthouse ~ 8.2014

(Also part of the "Downtown District" Collection) 29-year-old W.A. Ritchie won the design competition sponsored by the Board of County Commissioner in 1893 for the Spokane County Courthouse. Construction in the French Renaissance style began in 1894 on property located just across the Spokane River from the heart of downtown. It was regarded as a masterpiece with its romantic statuesque towers, handsome masonry and intricate wrought-iron metalwork. The center tower and roof were freshened up in 2012. It has been an important part of Spokane's skyline for over a hundred years. A dubious honor, the courtyard held the county's first public hanging on its grounds in 1897, executing a man who had murdered a woman. **Highlight** - I dedicated this painting to my father, a successful Spokane attorney who spent a great deal of time in this building.

Patti Simpson Ward



The North Side, Spokane, Washington

30 FINE ART "AMERICANA" PAINTINGS OF PRETTY PUBLIC PLACES AND "HOME SWEET HOMES"
• INCLUDING GONZAGA UNIVERSITY, GONZAGA PREP, SAINT AL'S GRADE SCHOOL, OTHER SCHOOLS AND CHURCHES PLUS COZY COTTAGES, MARVELOUS MANSIONS AND MORE!



"HOME SWEET HOMES" ON THE NORTH SIDE • ALPHABETICALLY BY NEIGHBORHOOD

"HOME SWEET HOMES" • HISTORIC CHARMING CORBIN PARK

Peddling Posies on Park Place ~ 6.2018

The Corbin Park Historic District has always been a remarkably pretty pocket of homes on Spokane's North Side. The park's property once served as the Washington-Idaho Fairgrounds and Racetrack from 1886 to 1897 before it became Corbin Park. Noted landscape architects, the Olmsted Bros., shared ideas to enhance the park's original plan. Most of the residences were built before 1927 once the racetrack became the park. Daniel Corbin platted the neighborhood in the early 1899, and visitors here have found everything from imposing three-story Victorians to charming cottages like this one on Park Place. I fell in love with the pretty place when shooting photos for SPA's 2018 Autumn Tour of Historic Homes. The "witches hat" on the right side of the roof and wrap-around porch were unique architectural touches. I painted blossoms everywhere in this piece and added the vintage trailer and Schwinn bike. This artwork pictured pals Peggy Caprye and Jeannie Fruci with me - our arms filled with flowers, of course! *Highlight* - The Corbin Park District has been named on the Local, State and National Registers of Historic Places.



Witches on Woodies at Corbin Park ~ 7.2018

The Corbin Park Historic District has been a unique pocket of homes on Spokane's North Side since the early 1900s when Daniel C. Corbin developed the neighborhood around the park. Oval-shaped Corbin Park had once been the Washington-Idaho Fairgrounds and Racetrack from 1886 to 1897. Later, this district was named on the Local, State and National Registers of Historic Places. This three-story Queen Anne was the very first residence constructed there, created in 1902 by prominent builder Harry J. Skinner for his family. He built several other homes in this neighborhood and on Spokane's North Side. I gave this scene a Halloween theme with three witches dancing to the ghosts' spooky serenade, lit by over a dozen Jack-O-Lanterns peppering the property. *Highlight* - Over the years, Corbin Park became THE Halloween destination with homes decorated from head-to-toe and the neighborhood hosting as many as 10,000 trick-or-treaters each Autumn.

"HOME SWEET HOMES" • INDIAN TRAIL ROAD NEIGHBORHOOD

Scarlet Geraniums on Sally Court ~ 1.2014

This friendly family residence was built in a suburban neighborhood on the North Side near Indian Trail Road on Sally Court in the 1980s. It became the home of good friends Jim and Linda (Wamstad) Dean. Linda was a classmate at Holy Names Academy, joining our student body in our senior year. In 2010, Linda and I reconnected at a class reunion party held on Whidbey Island at Kathy Ryan Gould's Summer home and I shared with Linda that Doug and I had plans to relocate back to Spokane in 2011. After the move, Linda and Jim did everything they could to make us feel welcome, so our first year back in Spokane was an easy transition after decades spent in the Seattle area. She opened doors for me as a fine artist, invited me to knitting and book clubs - and loaned Jim to Doug and me for afternoons of golf. *Highlight* - For her warmth and friendship, a portrait of Linda's home and family of three (painted when they all were a couple of decades younger) was the perfect way to share my gratitude.



HOME SWEET HOMES • THE LOGAN NEIGHBORHOOD

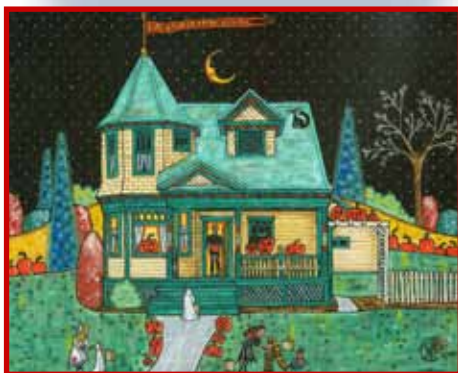
Christmas Queen Anne ~ 12.1995

This was the second portrait that I painted of the Joe Doohan home for the family when they were living in the North Side neighborhood during the early years of their marriage. The first painting was done with a Halloween trick-or-treating theme and you'll often find it featured on my Autumn web site. This Victorian was located a few short blocks north of Gonzaga University in the Logan Neighborhood. The charming two-story with its "witches hat" was in pretty disastrous shape due to several different households of students who had abused the structure during their tenure of renting it. It reminded me of the house in "It's a Wonderful Life", as when I first saw this house, it was similar to the one featured in the Jimmy Stewart/Donna Reed classic Christmas film. Joe and Mary painstakingly transformed it with months of scraping, painting, refinishing and updating. Charmingly detailed both inside and out, this home created many happy memories for the very young Doohan family when the couple was starting their family. *Highlight* - Mary Doohan sponsored and helped me for years at the Spokane Club's Holiday Artisan Fair in the early 2000s, so I painted this portrait of their home and gave her the original artwork.



Happy Halloween at Joe & Mary's ~ 10.1994

This sweet Victorian Queen Anne beauty was built a few blocks north of Gonzaga University in Spokane's Logan North neighborhood - probably at the turn of the last century when this style of architecture was extremely popular. In the 1980s, this home was immaculately restored by Joe Doohan and his wife Mary who took it from a very badly damaged student rental to the "Carpenters' Gothic" gem here. The two-story was given a complete face-lift - both inside and out. The couple stripped paint, filled holes in the walls and cracks in the ceiling, refinished floors, replaced the electrical, painted endlessly - and even added a stamped tin roof to the kitchen which also included a small brewery. I was so impressed by their final result that I painted this Halloween-themed portrait for them - complete with two-dozen pumpkins. The scene pictured Joe and Mary with their newly started family plus friendly neighborhood trick-or-treaters.



Patti Simpson Ward



The North Side, Spokane, Washington

30 FINE ART "AMERICANA" PAINTINGS OF PRETTY PUBLIC PLACES AND "HOME SWEET HOMES"
 • INCLUDING GONZAGA UNIVERSITY, GONZAGA PREP, SAINT AL'S GRADE SCHOOL, OTHER SCHOOLS AND CHURCHES PLUS COZY COTTAGES, MARVELOUS MANSIONS AND MORE!



North Side Noel ~ 12.1987

This was a portrait of the classic Queen Anne-style home that my father grew up in just before the Great Depression hit Spokane in the late 1920s. Life had been very prosperous for the Simpson family and they not only owned this beautiful home, but another that added to the family's revenue as a rental. Pictured in front of the three-story Victorian were my dad Joseph and his little sister Wanda, about to take their "Flexible Flyer" sled out for a ride. Sadly, the Depression spelled disaster for this family as it did for so many others. The Simpsons experienced hard times and lost all their properties to foreclosure - an all too common fate in the tragic time. A highway was constructed through the property decades later, so this pretty Victorian was demolished in that process. Luckily my grandmother Jessie Simpson kept several photographs of it, which made this portrait possible. *Highlight* - I gave prints of the finished painting to my dad and aunt for Christmas in 1987, which was fortuitous as a few short months later, my father passed away.



NEW! Patriotic Picnic at the Whimsical Wagon Wheel House ~ 4.2021

This portrait of a remarkably beautiful Queen Anne down the alleyway across from Gonzaga Prep's east parking lot was in the midst of an ambitious renovation when I discovered it 4 years before I created this painting. The property's unusual choice of old wagon wheels to border the alleyway suggested it may have been a homestead once. I was truly stunned at what a lovely home it must have been when originally constructed - and delighted to see that someone had taken it under their wing, breathing life back into the setting. I did some lengthy research, trying to find out whose grand home this once was, but all to no avail. I gave the portrait a patriotic theme with a huge flag, lots of bunting, and friendly folks about to enjoy a Summer picnic. *Highlight* - This was one of a very few grand mansions built in this section of Spokane's North Side that had largely been populated with for decades with simple modest cottages and bungalows.



"HOME SWEET HOMES" • WEST POINT ROAD ON THE CLIFFS ABOVE THE SPOKANE RIVER

Gathering Geraniums at the Hennessey House (Bleeker House) ~ 8.2003

This pristine white clapboard three-story residence accented with blue trim and shutters was designed in the Dutch Colonial Revival style by architect C. Ferris White. It was home for decades to the Harry Hennessey family of four kids - Stewart, Heather, Molly and Erin. Daughter Heather was a classmate of mine when I was attending high school at Holy Names Academy. Located on West Point Road on what may have been the shortest street in Spokane, it was perched on a cliff overlooking the Spokane River valley below with old Fort George Wright in the distance beyond. *Highlight* - When I was working on this piece, Heather shared that her mother decorated the front porch with masses red geraniums every spring, so I pictured Heather, me and their beloved pooch Woofy carrying on the tradition.

Historic Bleeker House ~ 3.2009

This was a portrait I completed of the historic North Side home built for Harry and Katherine Bleeker in 1909. A Dutch descendent, Bleeker was once secretary/vice president of Spokane's Washington Water Power Company. Famed architect C. Ferris White designed the home in the Dutch Colonial-Revival style, influenced by 1700-1800s farmhouses in New York's Hudson River Valley. Architectural details included multi-paned windows, louvered shutters and rare flared-roof eaves. When I painted this portrait in 2009, owner Tim Lewis had just finished a major renovation on the house, bringing it back to its authentic period beauty and ensuring its spot on the National Register of Historic Places. It 2009, it was featured in the Northwest Museum of Arts and Culture's Mother's Day Tour of Historic Homes. Ten years later, Spokane Preservation Advocates highlighted it in their Historic Home Tour. *Highlight* - One of my Holy Names Academy classmates, Heather Hennessey, grew up in this stunning home overlooking the Spokane River and historic old Fort George Wright.



The Old Maxwell-Pettet Place ~ 8.2008

This snowy scene portrayed the old Maxwell-Pettet place located on picturesque West Point Road. This sprawling North Side residence was reputed to be the oldest home in Spokane, according to community public records. The original small cottage was built by the Pettet family who sold it a short time later to the Maxwells - which is how the home got its name. The Maxwells lived in this residence for several decades. Eventually, the property was sold to the Powell family. Over the years, the original wood cottage was encased and added on to, resulting in this remarkably pretty rambling cottage in the woods on cliffs overlooking the Spokane River and old Fort George Wright. *Highlight* - William Powell married Helen Campbell, the only daughter of Amasa and Grace who raised their daughter in the historic Tudor Revival Campbell House, part of the MAC (Northwest Museum of Arts & Culture).



Patti Simpson Ward

