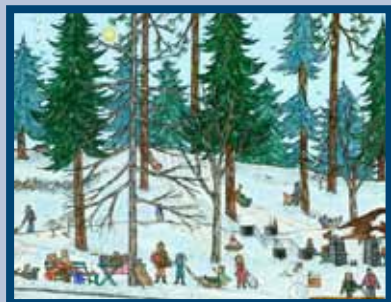


24 YEARS
of Inland NW
Calendars

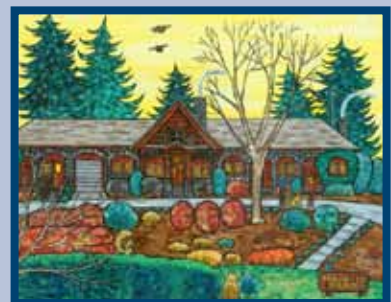
Patti Simpson Ward's "Americana" Artwork of Spokane, WA Celebrating Our City Parks



JAN. Cavorting at Cannon Hill Pond
Neighborhood Skating Pond
CANNON HILL PARK • SOUTH HILL



FEB. Sledding on the South Hill
Beloved yet Treacherous Hill on Grand Boulevard
MANITO PARK • SOUTH HILL



MAR. Afternoon, Administration Building
Arts & Crafts Shingle/Basaltic Rock Structure
MANITO PARK • SOUTH HILL



APRIL Marriage, The Moore-Turner Heritage Gardens
Rare Restored Early 1900s Heritage Gardens
THE MOORE-TURNER HERITAGE GARDENS • SOUTH HILL



MAY The Swans at Mirror Lake (Manito)
Family of Swans on Manito Park's Pond
MANITO PARK • SOUTH HILL

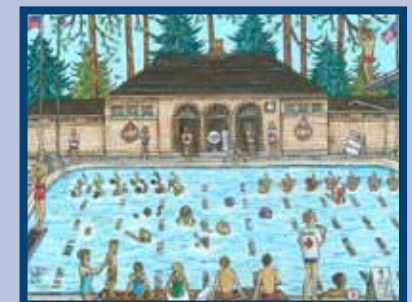


JUNE Davenport Fountain, Duncan Garden
Versailles-Style Garden with Davenport Fountain
MANITO PARK • SOUTH HILL

NEW!



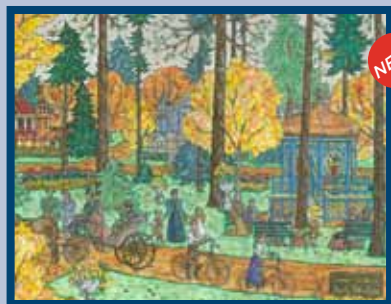
JULY Riverfront Park Reverie
Railway Station Clock Tower and Radio Flyer Slide
RIVERFRONT PARK • DOWNTOWN SPOKANE



AUG. Comstock Pool in the 1950s
The Pool as it Looked Mid-Century
COMSTOCK PARK • SOUTH HILL



SEPT. Riding the Jack Rabbit at Nat
Hair-Raising Roller Coaster at Natatorium Park
NATORIUM PARK • NORTH SIDE



OCT. Vintage View of Coeur d'Alene Park
Park in Spokane's Oldest Neighborhood in the Early 1900s
COEUR D'ALENE PARK • BROWNE'S ADDITION

NEW!



NOV. Fun and Frolic at the Manito Fireplace
Historic Basaltic Rock Fireplace at the Pond's West End
MANITO PARK • SOUTH HILL



DEC. The Christmas Carousel
Historic Looft Carousel at Christmastime
RIVERFRONT PARK • DOWNTOWN SPOKANE

NEW!

©2018 Patti Simpson Ward

2018

12 Paintings selected from the Award-Winning "Americana" Artist's 250+ Piece Collection
Volume 24 ★ Portraits of Browne's Addition, Downtown, North Side and South Hill Parks

